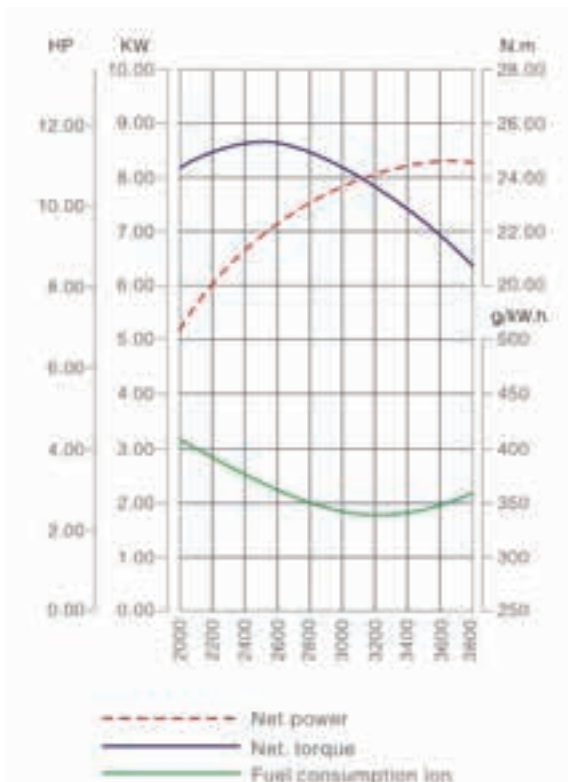


# G 390

# HP 13



POWERED by  
**Loncin**

## MOTORE 4 TEMPI - ENGINE 4 STROKE

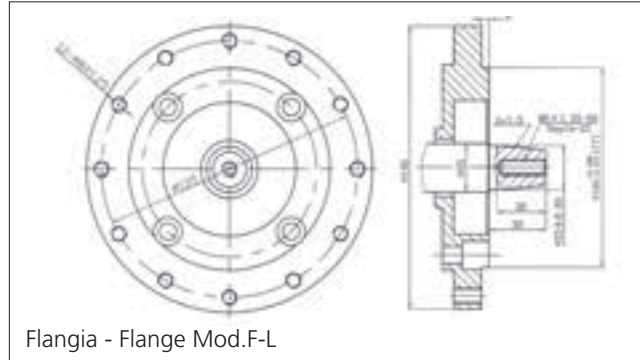
Modello Model	Potenza nominale Rated power	Coppia massima Max. torque		Sistema avviamento Starting system	Cilindrata Displacement	Carburante Fuel
type	3600 r.p.m.	Nm	rpm	type	cc	type
Monocilindrico, raffreddamento ad aria, 4 - tempi Single cylinder, forced air cooling, 4 - stroke	8,2 kW	25,1	2500	manuale - elettrico recoil - electric	389	<b>Benzina Gasoline</b>

Capacità serbatoio Tank capacity	Capacità serbatoio olio Oil tank capacity	Rumorosità Noise	Alesaggio corsa Bore Stroke	Dimensioni Dimensions	Peso a secco Dry weight
lt	lt	≤7m dB (A)	mm	mm	Kg
6,5	1,1	70	88 x 64	405 x 450 x 443	31

VERSIONE / VERSIONS



Albero conico D.23  
Cilindric shaft

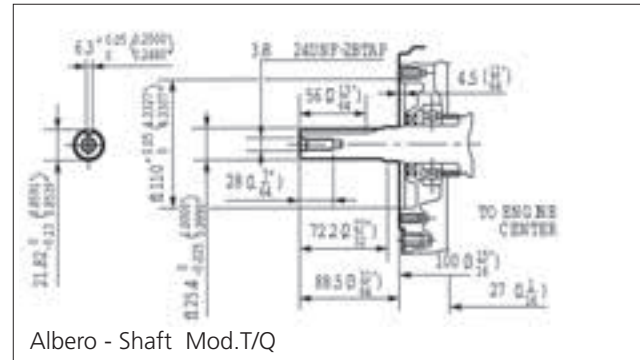


G 390 F-L

- Albero Conico D.23
- Avviamento Manuale
- Filtro Aria bagno olio



Albero cilindrico D.25,4  
Cilindric shaft

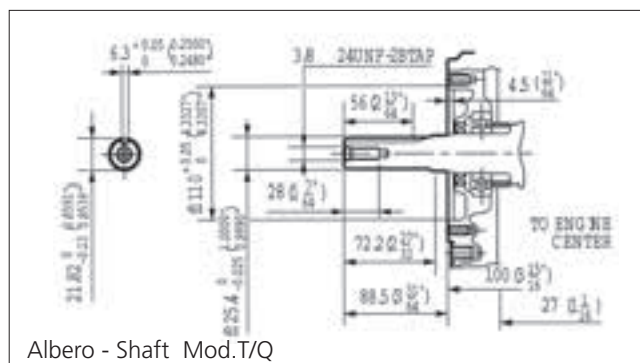


G 390 F-T/Q

- Albero Cilindrico D.25,4
- Avviamento Manuale
- Filtro Aria a secco



Albero cilindrico D.25,4  
Cilindric shaft

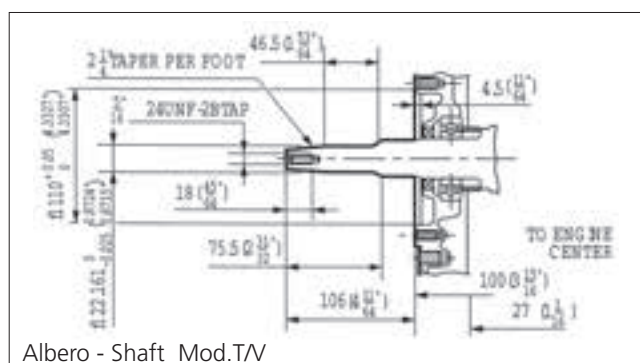


G 390 FD-T/Q

- Albero Cilindrico D.25,4
- Avviamento Elettrico
- Filtro Aria a secco



Albero lungo generatore  
Generator shaft



G 390 FD-TV

- Albero lungo generatore
- Avviamento Elettrico
- Filtro Aria a secco